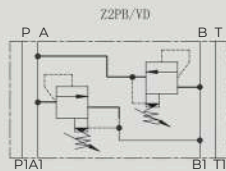
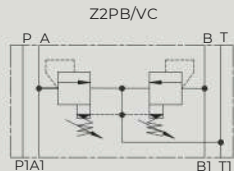


Z2PB10型叠加式溢流阀

Z2PB10 SERIES MODULAR RELIEF VALVES

符号 SYMBOL



Z2PB0型压力控制阀是叠加板结构的先导式溢流阀。

Pressure relief valves of Z2PB0 series are pilot operated style modular valves.

▶ 技术参数 Technical data

通径 (mm) Size	10
工作压力 (MPa) Operating pressure (MPa)	31.5
流量 (L/min) Flow rate (L/min)	100
油温范围 (°C) Oil temperature range (°C)	-20 ~ 70
重量 (千克) Weight (KGS)	Z2PB 3.1
阀体 (材料) 表面处理 Valve body (Material) Surface treatment	铸件 表面磷化处理 casting phosphating surface
油液清洁度/Oil cleanliness	NAS1638 9级和ISO440620/18/15 级 NAS1638 class 9 and ISO4406 class 20/18/15

Z 2 PB 10 VC 1 40 315 V *

叠加式
Modular type

2=双溢流阀 (只有 VC,VD)
2=Two relief cartridges
(Only for VC,VD)

型号
Model

通径:1
Size:0
1

溢流方向 Relief from
VC:A→T B→T
VD:A→B B→A

附加说明
For further details

无 = 丁晴橡胶
V = 氟橡胶
No code = NBR seals for petroleum oils
V = FPM seals for phosphate ester

Pressure range 压力等级
50 = 5Mpa
100 = 10Mpa
200 = 20Mpa
315 = 31.5Mpa

系列号
Series number

1=手柄
1=handwheel

▶ Z2PB10VC VD外形尺寸和安装 Z2PB10VC VD External Dimensions and Fittings

