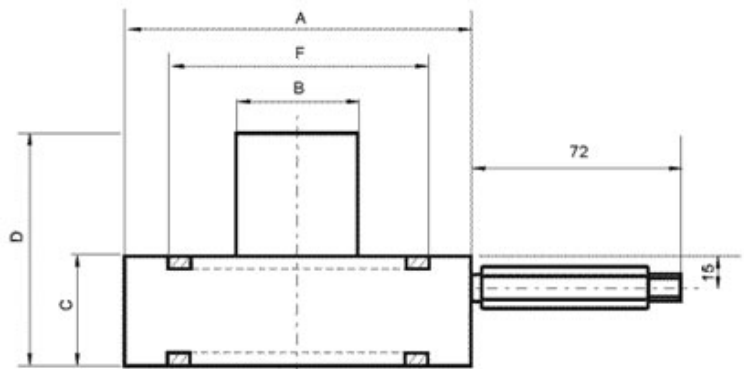


Válvulas de control direccional

Válvula de prellenado

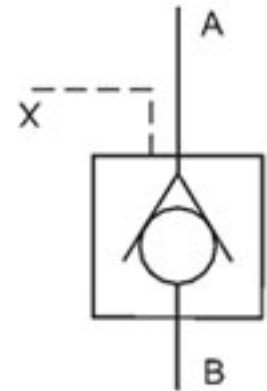
Tamaño del montaje (AF Series Prefill Valve)



Descripciones de modelo

AF - * - 1 C - 90 *

- Remarks
- Design serial number
- Opening Press: C=0.02MPa
- 1=Pilot-Operated
- Size: 50=DN50
63=DN63
80=DN80
100=DN100
125=DN125
- Type: Series prefill valve



| Modelo | FA-50 | FA-63 | FA-80 | FA-100 | FA-125 |
|---------------------|-------|-------|-------|--------|--------|
| Flúidos (l/min) | 400 | 630 | 1000 | 1600 | 2500 |
| Presión Máxima(MPa) | 25 | 25 | 25 | 25 | 25 |
| Peso (Kg) | 2.8 | 3.8 | 6 | 10.8 | 23.5 |

| Modelo | A | B | C | D | E | F |
|--------|------|-----|------|-----|------|--------|
| FA-50 | Φ128 | Φ43 | 31.5 | 88 | 1/4" | Φ98.5 |
| FA-63 | Φ143 | Φ50 | 33.5 | 96 | 1/4" | Φ105 |
| FA-80 | Φ169 | Φ57 | 38.5 | 115 | 1/4" | Φ132.5 |
| FA-100 | Φ212 | Φ70 | 44 | 122 | 1/4" | Φ155 |
| FA-125 | Φ248 | Φ89 | 51 | 155 | 3/8" | Φ220 |