

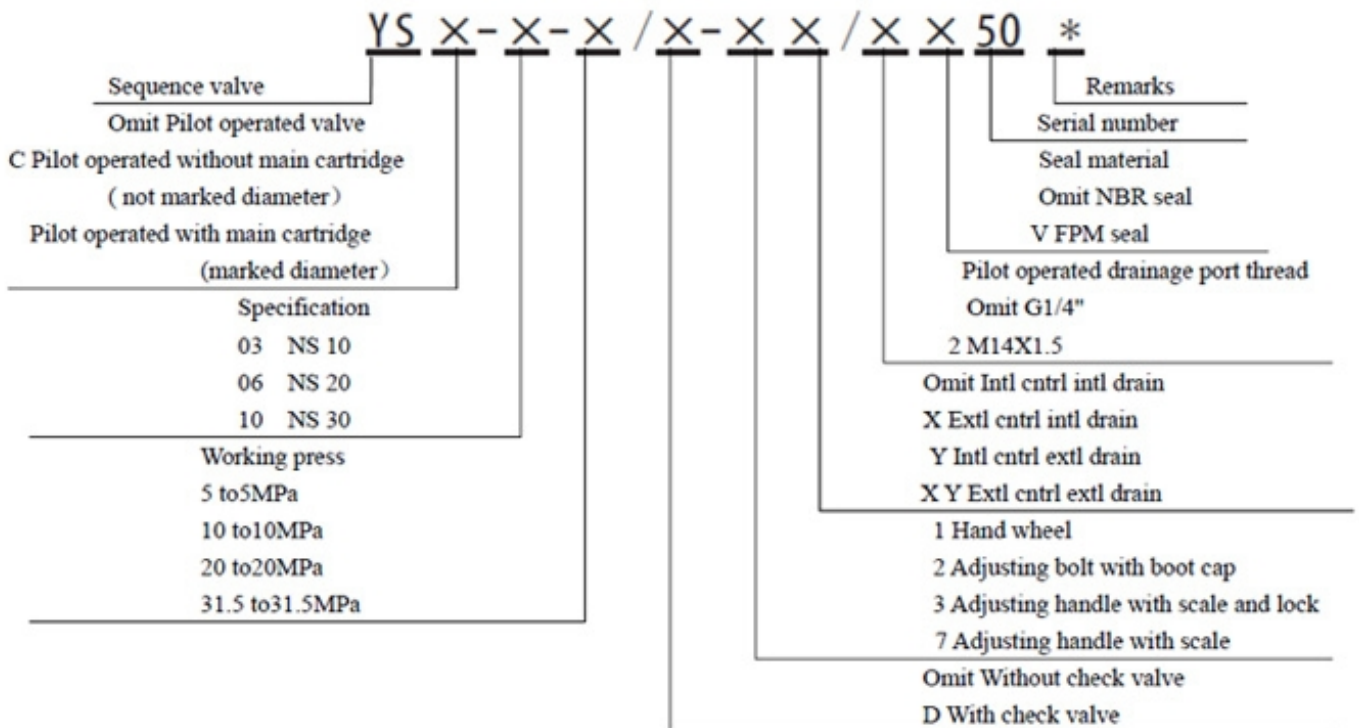


Válvulas de control de presión

Sequence Valve



Descripción de modelos





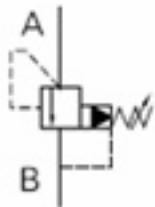
Válvulas de control de presión

○ Especificaciones técnicas

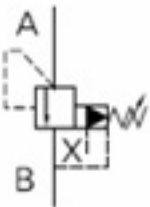
		3	6	10		
Maxima presión de trabajo (MPa)		31.5				
Fluido Maximo(L/min)		250	500	650		
Fluidos		Aceite, phosphate-ester				
Temp de fluídos(C°)		-20~70				
Viscociad(mm²/s)		12~380				
Presión de trabajo (Mpa)		5	10	20	31.5	35
Peso(Kg)	Y	2.6	3.5	4.4		
	YW	3.8	4.7	5.6		

○ Código de símbolos

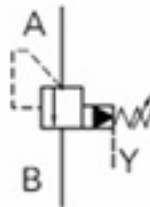
YS..



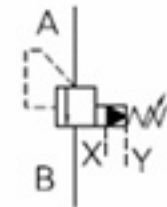
YS..X/..



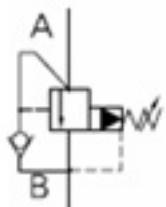
YS..Y/..



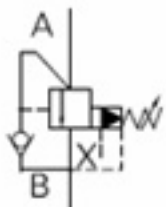
YS..XY/..



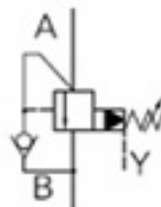
YW..D..



YW..D..X/..



YW..D..Y/..



YW..D..XY/..

